



QUICKBLOCK[®]
DEFENCE

TACTICAL TRAINING SOLUTIONS

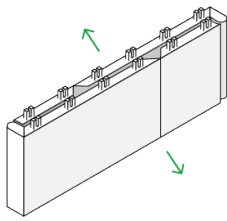
RAPID ASSEMBLY
RECONFIGURABLE
EASY TO CONSTRUCT

+44 1786 643 939
info@quickblock.uk
quickblock.uk

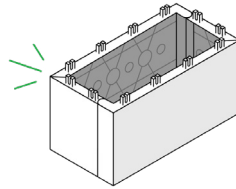
QUICKBLOCK® is a modular, easy-to-use building system delivered in flat-pack form, ideal for rapid assembly and disassembly in various tactical training, infrastructure and force protection scenarios.

Made from 100% recycled plastic, the QUICKBLOCK interlocking design allows you to stack them as simply / easily as children's building blocks requiring no specialist tools or labour and can be filled with local materials for added strength.

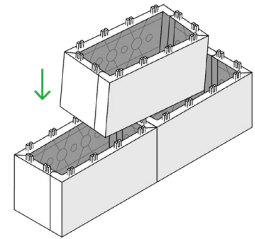
HOW TO USE QUICKBLOCK



1. OPEN



2. CLICK



3. BUILD

BENEFITS OF QUICKBLOCK

01

FAST AND EASY ASSEMBLY

No need for specialist skills or tools.

02

DURABLE, STRONG AND MADE TO LAST

Undergone extensive impact testing, can withstand 100mph winds, heavy rainfall and includes UV stabiliser in the manufacturing process for enhanced protection.

03

FLAT-PACKED AND PORTABLE

250 large blocks can be transported on a standard pallet; each block weights 1.2kgs.

04

RECYCLED, REUSABLE AND RECYCLABLE

Made from 100% recycled polypropylene.

ACCELERATING MISSION READINESS WITH QUICKBLOCK'S INNOVATIVE TRAINING SOLUTIONS

QUICKBLOCK has reimagined how training environments are created, offering ground-breaking solutions that empower defence forces to prepare for the challenges of today's dynamic battlefield. Trusted by esteemed military units for Close Quarter Battle (CQB) training, including the Infantry Battle School, UK. QUICKBLOCK delivers unique versatility, affordability, and ease of use.



UK MOD INFANTRY BATTLE SCHOOL

QUICKBLOCK is currently being used at the Infantry Battle School (British Army) for Close Quarter Battle (CQB) training. Colour Sergeant, Chris Smith was delighted with QUICKBLOCK for its unique versatility, affordability, and ease of use.

"We've been trying to construct the CQB facility for some time and we've been trying to find a product which is cost-effective for a start, easy to construct, robust, can be stripped down and re-made into different set-ups. For some time, we've been trying to find a good product and QUICKBLOCK seemed to tick all these boxes"

*COLOUR SERGEANT
– CHRIS SMITH, BRITISH ARMY*



MOCK TRENCH TRAINING

2 Med Brigade in York, UK used QUICKBLOCK to construct mock trenches, providing UK and Ukrainian army medics with invaluable real-world experience in trench-based medical treatment

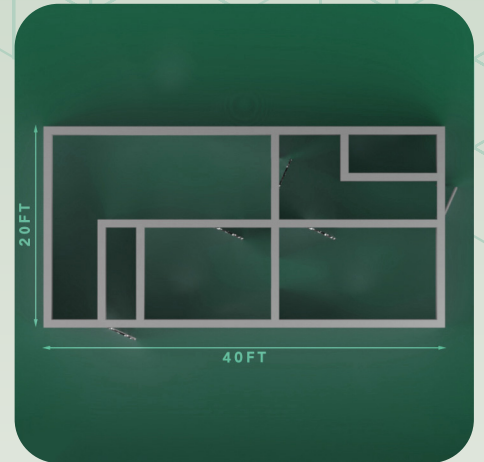
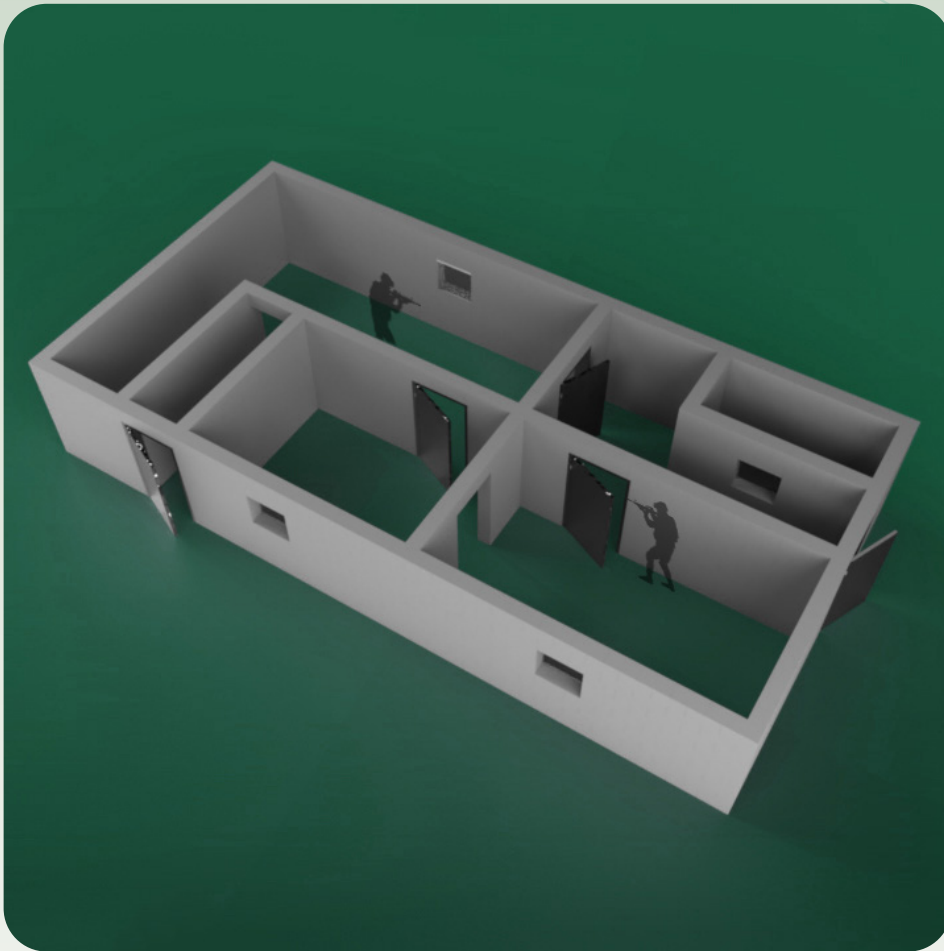
To build these trenches with traditional materials would have required excavating the land, skilled labour, planning process and significant time and money. However, with QUICKBLOCK it was an efficient, cost-effective temporary solution that was assembled rapidly to exact configurations.

QUICKBLOCK PACKAGES

QUICKBLOCK Tactical Training Solutions

The QUICKBLOCK® Urban Training packages are a completely reconfigurable training solution which can be built as a temporary or semi-permanent training environment quickly and affordably.

ALPHA TRAINING KIT



The Alpha urban training package brings versatility to your training sessions, featuring 6 rooms, 5 doors, and 4 windows that can be customised to create dynamic scenarios tailored to smaller-scale CQB or Shoothouse training needs.

All the QUICKBLOCK packages can be reconfigured to suit training requirements, infinitely.

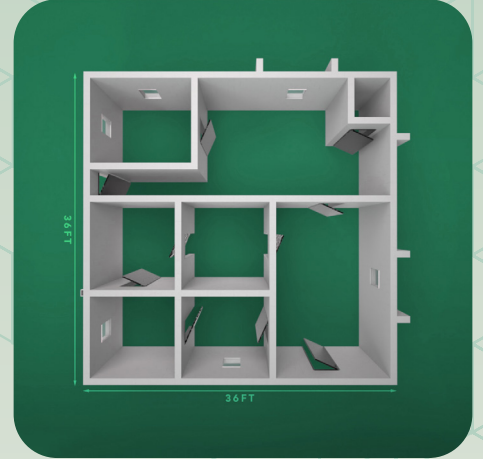
ALPHA Package:

6 Rooms

5 Doors

4 Window

BRAVO TRAINING KIT



Bravo package takes your training to the next level, offering a versatile setup with 8 rooms, 10 doors, and 6 windows. Its flexible design allows you to create complex scenarios with multiple rooms, hallways, open spaces, and storage areas, tailored to a wide range of CQB/FIBUA/Shoothouse training exercises.

Our scalable solutions for tactical operations are designed to be highly adaptable and customisable to suit any setup, ensuring seamless integration into various training environments. Engineered to withstand the rigors of intense training scenarios, these solutions provide durability and reliability.

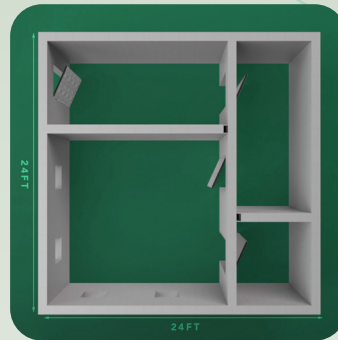
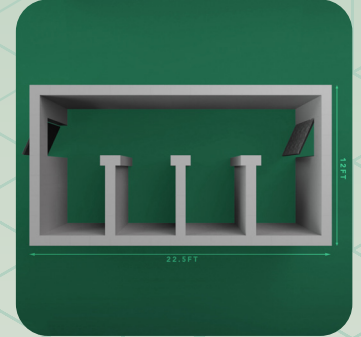
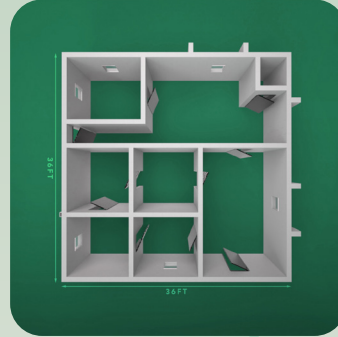
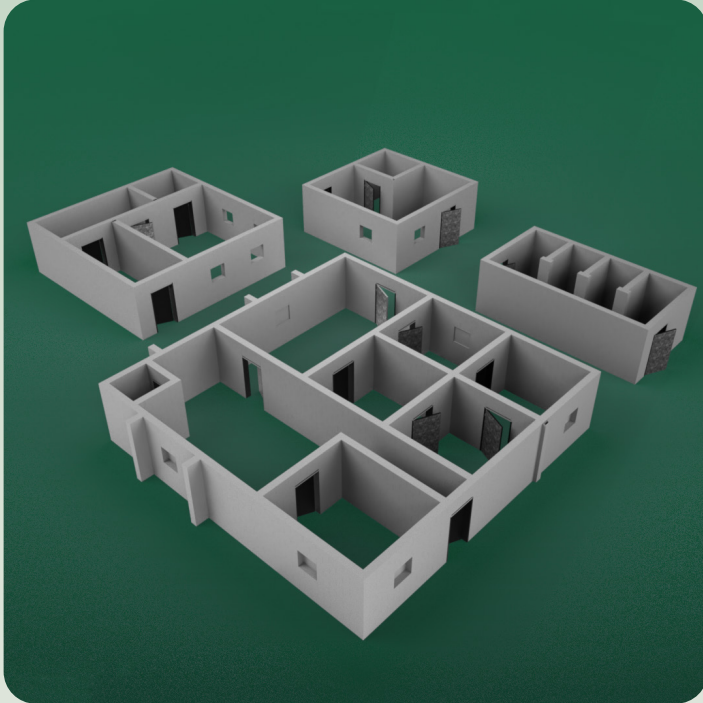
BRAVO Package:

8 Rooms

10 Doors

6 Window

CHARLIE TRAINING KIT



Charlie is the ultimate training solution, featuring 1 compound (comprising of 4 buildings), 15 rooms, 17 doors, and 13 windows. Designed for maximum changeability, it creates an intricate training environment with highly complex building layouts, offering endless opportunities to master advanced tactical skills.

All the QUICKBLOCK Urban Training Packages are ideal for honing soldier skills and readiness, equipping military personnel with the tools needed to excel in demanding operational situations.

CHARLIE Package:

- 1 Compound**
comprising of 4 buildings
- 15 Rooms**
- 17 Doors**
- 13 Window**

NEED TO ADAPT ANY OF THE PACKAGES?

No problem, we can work to your project requirements. QUICKBLOCK® structures can be built to replicate rooms of any size, hallways or free-standing walls.

There is no standard size QUICKBLOCK® wall, making our system adaptable to any training environment or space. This allows training personnel to design and build any layout to mimic a real-life scenario or to continually change and offer new and unique training drills.

TRAINING OBJECTIVES MET

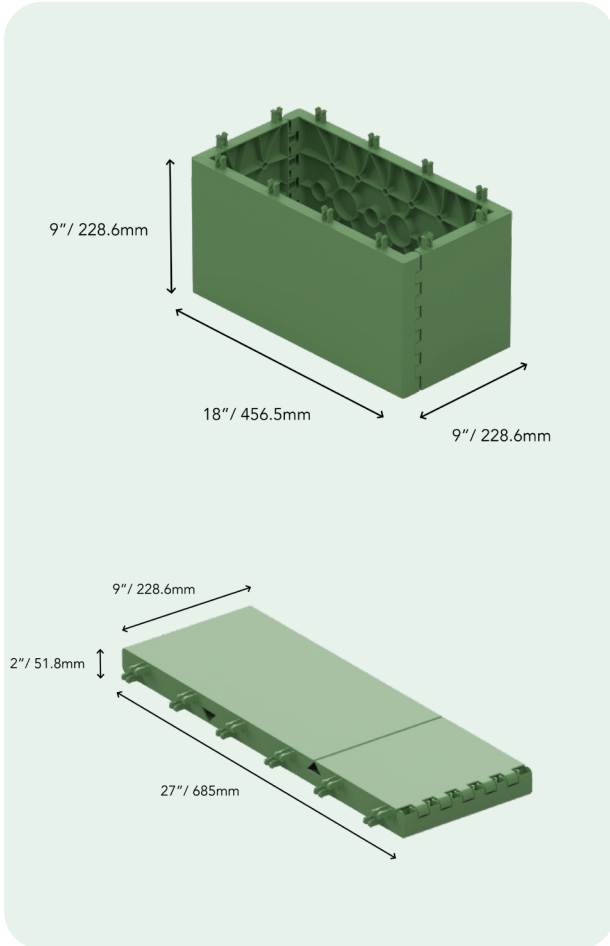
- Breaching and entry strategies
- Room clearance
- Room within room scenario
- Corridor clearance
- Moving between multiple buildings

QUICKBLOCK® DATA SHEET

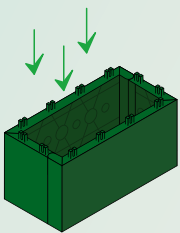
QUICKBLOCK is a rapid assembly building system made from 100% recycled plastic.

This system is structurally sound and ideal for temporary infrastructure and general engineering across a range of projects. The system can be in-filled with sand or aggregate to offer ballistic and blast protection.

KEY FEATURES



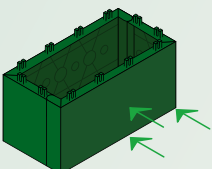
- Easy to use, intuitive design means anyone can build with QUICKBLOCK
- Made from 100% recycled plastic
- Very lightweight (less than 1.2kg per block)
- Flat-packed in deployment (250 blocks on NATO pallet)
- Ballistic resistance across multiple weapons when tested with sand and aggregate infill (full report available)*
- Multi-hit performance
- Blast resistance – successfully tested with 60mm mortar*
- QUICKBLOCK patented cell structure means threat is isolated to one part of the structure and damaged blocks can be replaced
- Training Required: 1 minute video tutorial available or simple instruction manual
- Colours (Light Grey and Olive Green)



VERTICAL LOAD BEARING

Test conducted by applying force downward

Max load - 1.6t (16.4kN)



HORIZONTAL COMPRESSION

Test conducted by applying force perpendicular

Max load - 0.36t (3.6kN)

MATERIAL MECHANICAL PROPERTIES

QUICKBLOCK is made from 100% recycled polypropylene

Tensile Strength	28 MPa
Tensile Elongation	>150%
Tensile Modulus	1241 MPa
Flexural Strength	41 MPa
Flexural Modulus	1379 MPa
Rockwell Hardness/ R value	90

Designed in Scotland.



Contact us to discuss your fast, simple and cost-effective
QUICKBLOCK tactical training solution.

+44 1786 643 939

info@quickblock.uk

quickblock.uk