



**QUICKBLOCK®**  
SECURITY

# IMMERSIVE TRAINING SOLUTIONS

RAPID ASSEMBLY  
PROTECTIVE  
INFRASTRUCTURE

+44 1786 643 939  
info@quickblock.uk  
quickblock.uk

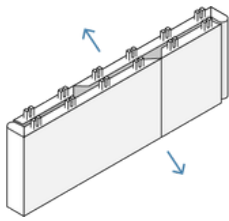
---

**QUICKBLOCK®** is a modular, easy-to-use building system delivered in flat-pack form, ideal for rapid assembly and disassembly in various infrastructure and force protection scenarios.

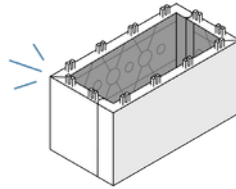
Made from 100% recycled plastic, the QUICKBLOCK interlocking design allows you to stack them as simply / easily as children's building blocks requiring no specialist tools or labour and can be filled with materials for added strength. They are reusable, recyclable, and come in two grades: **QUICKBLOCK** and the **QUICKBLOCK Defence**.

---

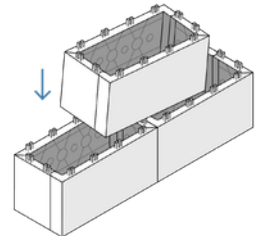
#### HOW TO USE QUICKBLOCK



1. OPEN



2. CLICK



3. BUILD

---

#### BENEFITS OF QUICKBLOCK

01

##### FAST AND EASY ASSEMBLY

No need for specialist skills or tools.

02

##### DURABLE, STRONG AND MADE TO LAST

Undergone extensive impact testing, can withstand 100mph winds, heavy rainfall and provide significant UV protection.

03

##### FLAT-PACKED AND PORTABLE

250 large blocks can be transported on a standard pallet; each block weights less than 1.1kgs.

04

##### RECYCLED, REUSABLE AND RECYCLABLE

Made from 100% recycled polypropylene.

# MODULAR TRAINING ENVIRONMENTS

## PROVEN IN BOTH DEFENCE AND SECURITY SECTORS

// We could have just built the structures, again, from (breeze) blocks or from plywood. What we wanted to do was something a bit more innovative. We wanted to use materials that were recycled. We also wanted to support small, medium companies and look for something that was different.

This is something that hasn't been done elsewhere and it'll be really interesting to see how it works for us into the future. The college of policing have been down and they're interested to see, too. But yeah, I guess doing something a bit more innovative and flexible, because the space can be reconfigured and is reasonably straightforward to do that, was really important to us. So, QUICKBLOCK was the right company for that.

— **Johanna Comer**, Chief Inspector, West Midlands Police



## WEST MIDLANDS POLICE

Are using QUICKBLOCK for their public order training, including a corridor clearance facility and violent person extraction room environment.

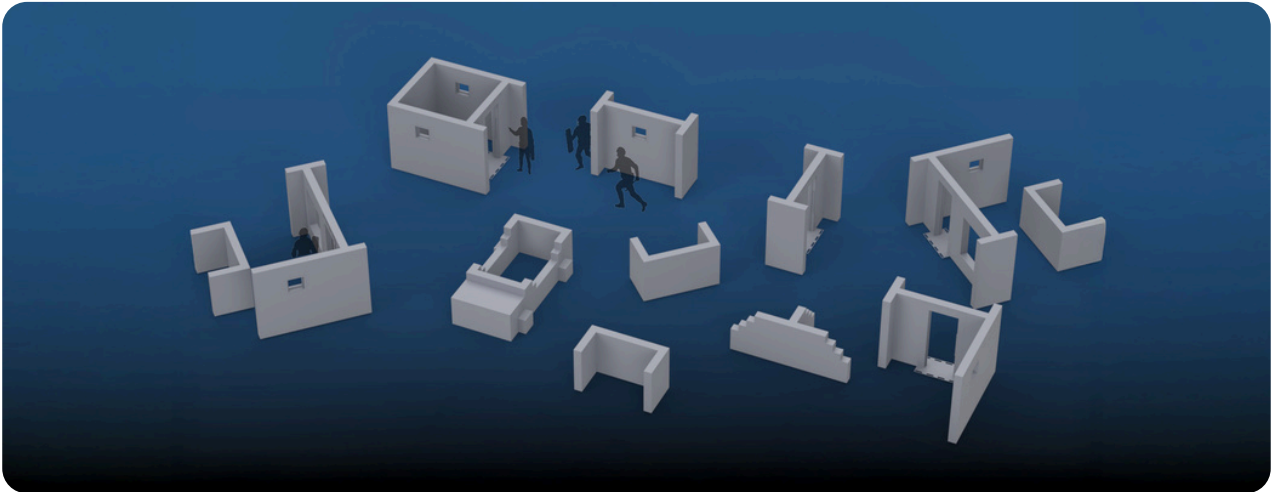
// We've been trying to construct the CQB facility for some time and we've been trying to find a product which is cost-effective for a start, easy to construct, robust, can be stripped down and re-made into different set-ups. For some time, we've been trying to find a good product and QUICKBLOCK seemed to tick all these boxes.

— **Chris Smith**, Colour Sergeant, British Army

## BRITISH ARMY

QUICKBLOCK is also currently being used at the Infantry Battle School (British Army) for Close Quarter Battle (CQB) training. Colour Sergeant, Chris Smith was delighted with QUICKBLOCK for its unique versatility, affordability, and ease of use.



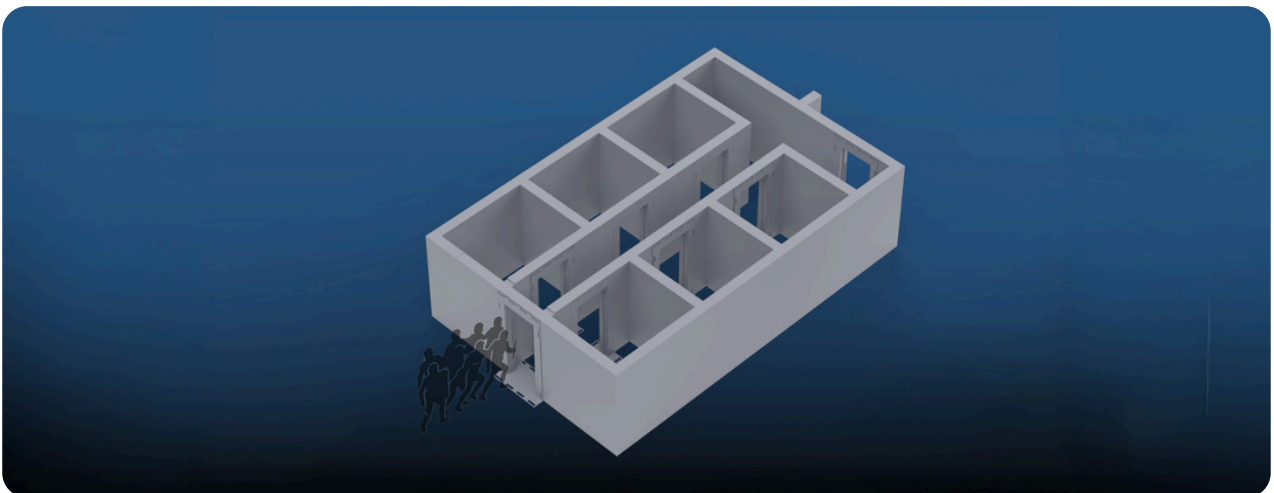


### URBAN PROPS KIT

Security operations vary, but planning and dynamic rehearsal are essential for police, SWAT and counter-terror units. The QUICKBLOCK Urban Props Kit supplies modular, transportable and reconfigurable set pieces including cars, holding cells, MoE Doors, shopfronts, vehicle checkpoints and street furniture. The kit can be used for training for warrant service, dynamic entry, vehicle stops, cordons and hostage rescue; use standalone for focused exercises or combine with other QUICKBLOCK training kits.

#### INCLUDED

- 5 MoE Doors
- 5 Windows



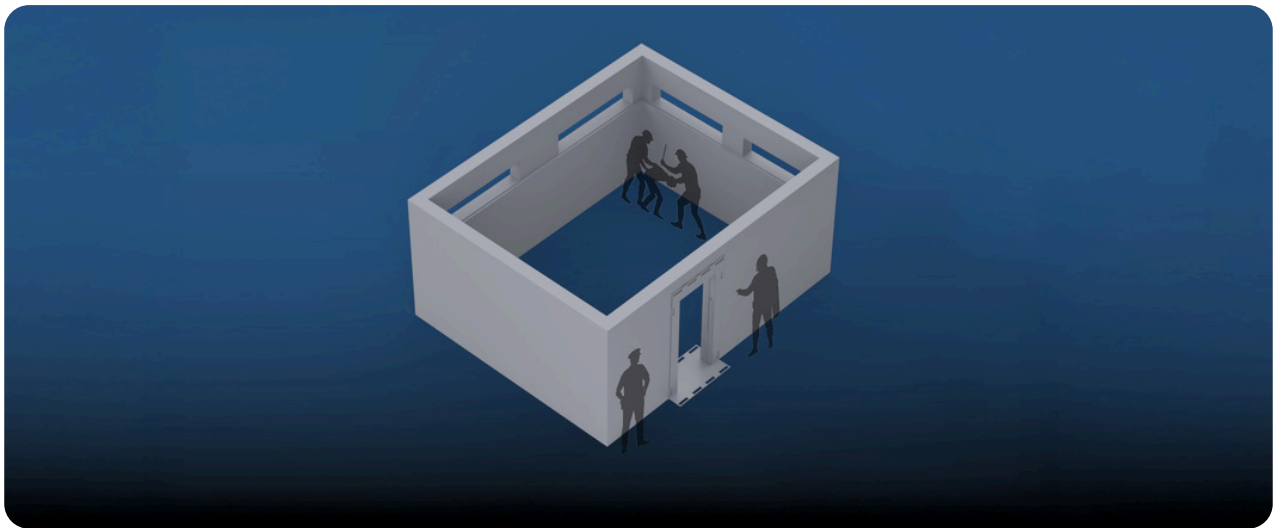
### CORRIDOR CLEARANCE KIT

QUICKBLOCK Corridor Clearance Kit is perfect for police, SWAT and counter-terror teams refining stack movement, hallway clearing, stairwell transitions and casualty evacuation in narrow, linear environments. Built for repeated dynamic training: the layout features 7 rooms, 5 MoE Doors and 8 doorways, with wall sections partially infilled with rubber blocks and secured with fixing plates to create a robust, impact-resistant structure suitable for dynamic entry and high intensity drills.

#### INCLUDED

- 7 Rooms
- 300 Rubber Blocks
- Full Structure Fixing Plates
- 5 MoE Doors

**MINIMUM FOOTPRINT**  
8.4 x 5.5m



## VIOLENT PERSON EXTRACTION ROOM KIT

A compact, reinforced training room for police, SWAT and counter-terror teams to practise containment, restraint and casualty removal under realistic pressure. It is constructed with rubber infill blocks and a steel uprights framework for impact resistance, fitted with a single doorway with an integrated MoE door and instructor viewing panels for oversight and recording. The kit can be fitted with foam panelling\* on the internal side.

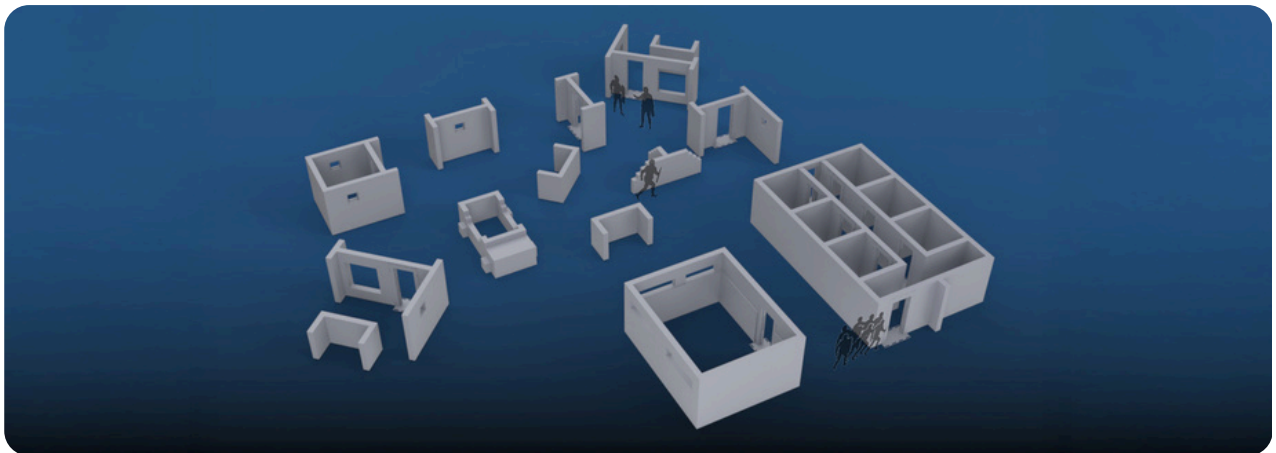
\*We work with a trusted third-party supplier who can provide foam panelling, and we would be happy to make an introduction upon request.

### INCLUDED

- 1 Room
- 300 Rubber Blocks
- Full Structure Fixing Plates
- Full Structure Scaffolding Poles
- 1 MoE Door

### MINIMUM FOOTPRINT

4.3 x 5.5m

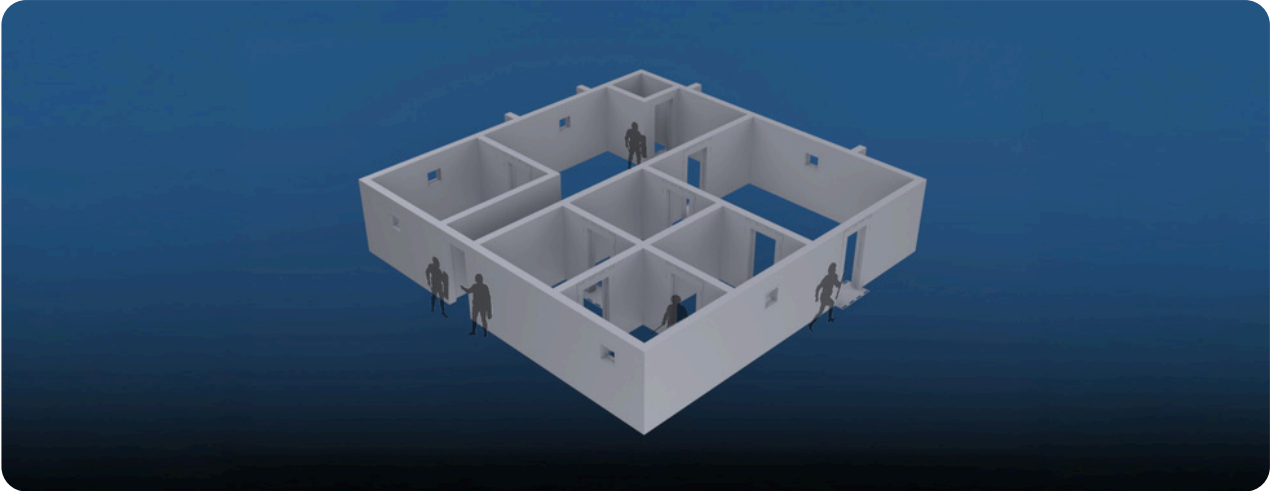


## PUBLIC ORDER KIT (CORRIDOR CLEARANCE, VPE ROOM & URBAN PROPS)

This bundle is a transportable suite for large-scale public-order and crowd-control training. This kit enables coordinated rehearsal of cordons, residential disturbance response, crowd movement, escorted extractions, casualty evacuation, vehicle checkpoints, storefront protection and dynamic team coordination. Can be combined with QUICKBLOCK's Residential Scenario Kit to create extended urban-residential scenarios.

### INCLUDED

- 3 Structures
- 650 Rubber Blocks
- Full Structure Fixing Plates
- Full Steel Uprights
- 11 MoE Doors
- 5 Windows



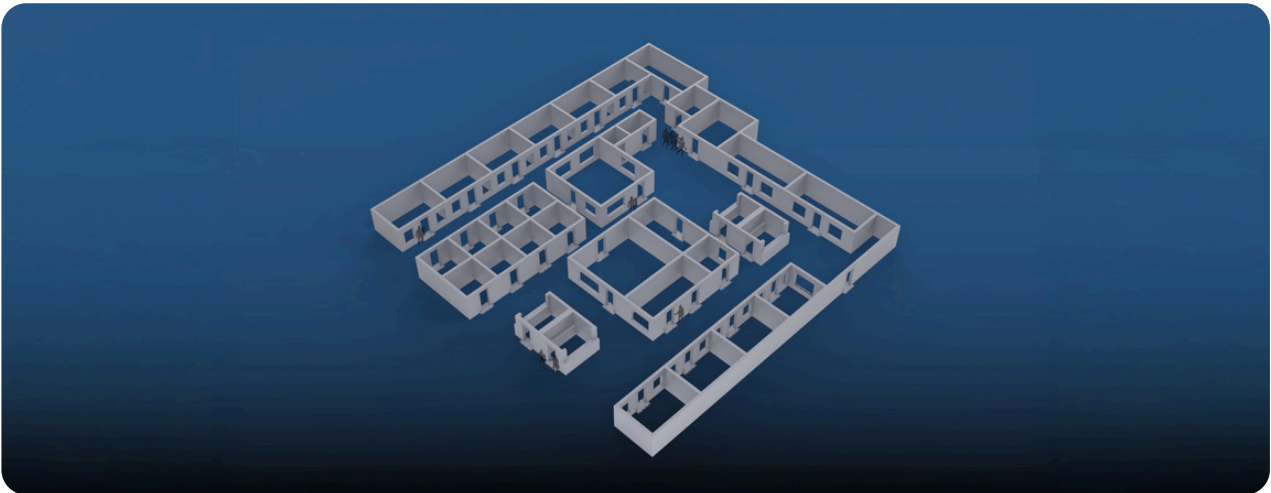
### RESIDENTIAL SCENARIO KIT

Take residential-level training out of the classroom and into a purpose-built scenario environment. The QUICKBLOCK Residential Scenario Kit is built for police, SWAT and counter-terror teams who need realistic, repeatable layouts for dynamic entry, room-clearing and building searches, including high-risk warrant service, hostage rescue and urban operations training.

#### INCLUDED

- 8 Rooms
- 9 MoE Doors
- 6 Windows

**MINIMUM FOOTPRINT**  
10.9 x 10.9m



### COUNTERTERROR TRAINING COMPOUND KIT

The QUICKBLOCK Counterterror (CT) Training Compound recreates a shopping centre/mall footprint with atrium, multiple retail units, service doors and food-court bays. This kit is designed to reconfigure into an airport terminal, concert arena entrance or other high-occupancy venue due to the modular design of our QUICKBLOCK system. Purpose-built for complex CT drills, it can be used for active-shooter and hostage scenarios, mass-casualty triage and evacuation, complex search and clearance and coordinated multi-agency response rehearsals.

**Our in-house design team can re-create the specific scenario you need for your Counterterror training compound.**

#### INCLUDED

- 34 Rooms
- 38 MoE Doors

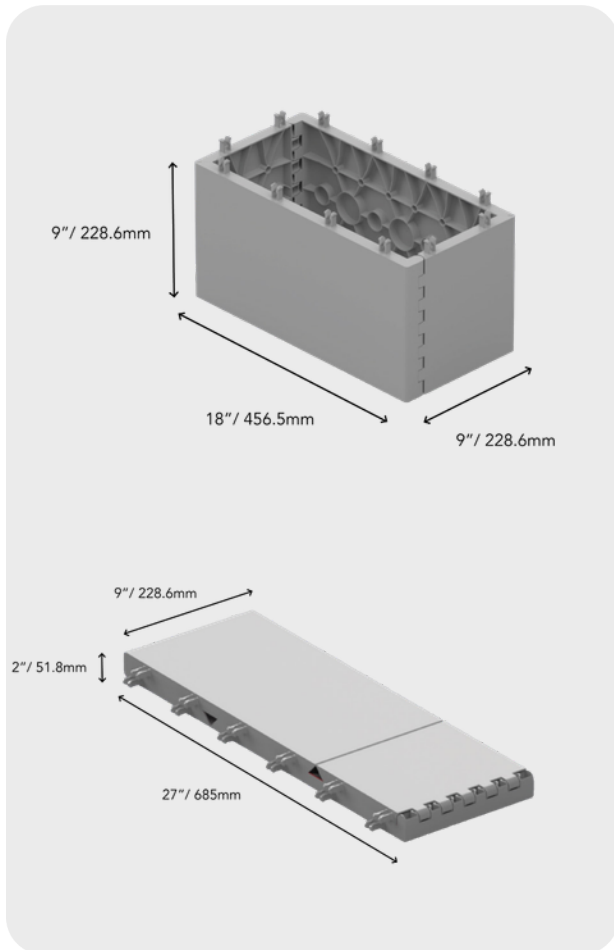
**MINIMUM FOOTPRINT**  
32.8 x 31.2m

# QUICKBLOCK® DATA SHEET

QUICKBLOCK is a rapid assembly building system made from 100% recycled plastic.

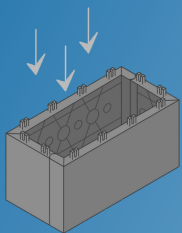
This system is structurally sound and ideal for temporary infrastructure and general engineering across a range of projects. The system can be in-filled with sand or aggregate to offer ballistic and blast protection.

## KEY FEATURES



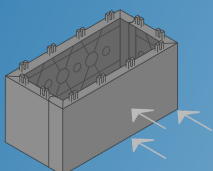
- Easy to use, intuitive design means anyone can build with QUICKBLOCK
- Made from 100% recycled plastic
- Very lightweight (less than 1.1kg per block)
- Flat-packed in deployment (250 blocks on NATO pallet)
- Ballistic resistance across multiple weapons when tested with sand and aggregate infill (full report available)\*
- Multi-hit performance
- Blast resistance – successfully tested with 60mm mortar\*
- QUICKBLOCK patented cell structure means threat is isolated to one part of the structure and damaged blocks can be replaced
- Training Required: 1 minute video tutorial available or simple instruction manual
- Colours (Light Grey and Olive Green)

**Scenario: Rapid assembly infrastructures, more time required to infill structure with sand/aggregate if additional protection is necessary.**



### VERTICAL LOAD BEARING

Test conducted by applying force downward  
**Max load - 1.6t (16.4kN)**



### HORIZONTAL COMPRESSION

Test conducted by applying force perpendicular  
**Max load - 0.36t (3.6kN)**

## MATERIAL MECHANICAL PROPERTIES

QUICKBLOCK is made from 100% recycled polypropylene.

Tensile Strength	28 MPa
Tensile Elongation	>150%
Tensile Modulus	1241 MPa
Flexural Strength	41 MPa
Flexural Modulus	1379 MPa
Rockwell Hardness/ R value	90

Designed in Scotland.

 **MADE IN  
BRITAIN**



Contact us to discuss your  
QUICKBLOCK Security project

on **+44 1786 643 939**

or email us on **info@quickblock.uk**

**quickblock.uk**